



UNFOLDING SPLENDOUR

UNFOLDING SPLENDOUR

6 - 21 February 2015
Opening Reception
Friday 6 February, 6pm

Arthouse Gallery is delighted to present 'Unfolding Splendour,' a group exhibition featuring works by a dynamic mix of contemporary artists interrogating the differing modalities of the landscape, on show from 6 - 21 February 2015.

Traversing urbanity and rurality, the natural and the constructed, 'Unfolding Splendour' takes the viewer on a visual voyage through the land, offering a glimpse into the infinite and ever-changing physiognomy of the physical world. From the surreal and uncanny to the sublime, the show charts different interpretations of and reactions to the environment, forcing us to consider our own perceptions of the world around us. Encompassing painting, drawing, sculpture and assemblage, and stylistically spanning photorealism to abstraction, 'Unfolding Splendour' reveals the contemporary flexibility of landscape art and reinforces the enduring relevance of this historical genre.



Robyn Sweaney, *Looking for shade*, acrylic on linen, 40 x 50 cm, \$3,200 - SOLD



Aaron Kinnane, *In before the rain*, oil on canvas, 54 x 54 cm, \$3,200



Kendal Murray, *Hide and Seek, Sneak, Technique*, mixed media assemblage,
16.5 x 12 x 10 cm, \$3,500



Carla Hananiah, *Journey to the Heights*, oil on board, 90 x 120 cm, \$4,800



Hobie Porter, *Hurley's Pass*, oil on linen, 105 x 125 cm, \$12,500



Peter Simpson, *Untitled*, oil on linen, 41 x 46 cm, \$2,600



Emma Walker, *Qualia*, oil and acrylic on board, 50 x 50 cm, \$2,000



Susan Baird, *Cameo*, oil on linen, 25 x 30 cm, \$2,000



John Baird, *Dismount*, acrylic, wallpaper, fabric & shellac on board, 120 x 120 cm, \$6,200



Robyn Sweaney, *Summer – waiting for rain*, acrylic on linen, 40 x 50 cm, \$3,200



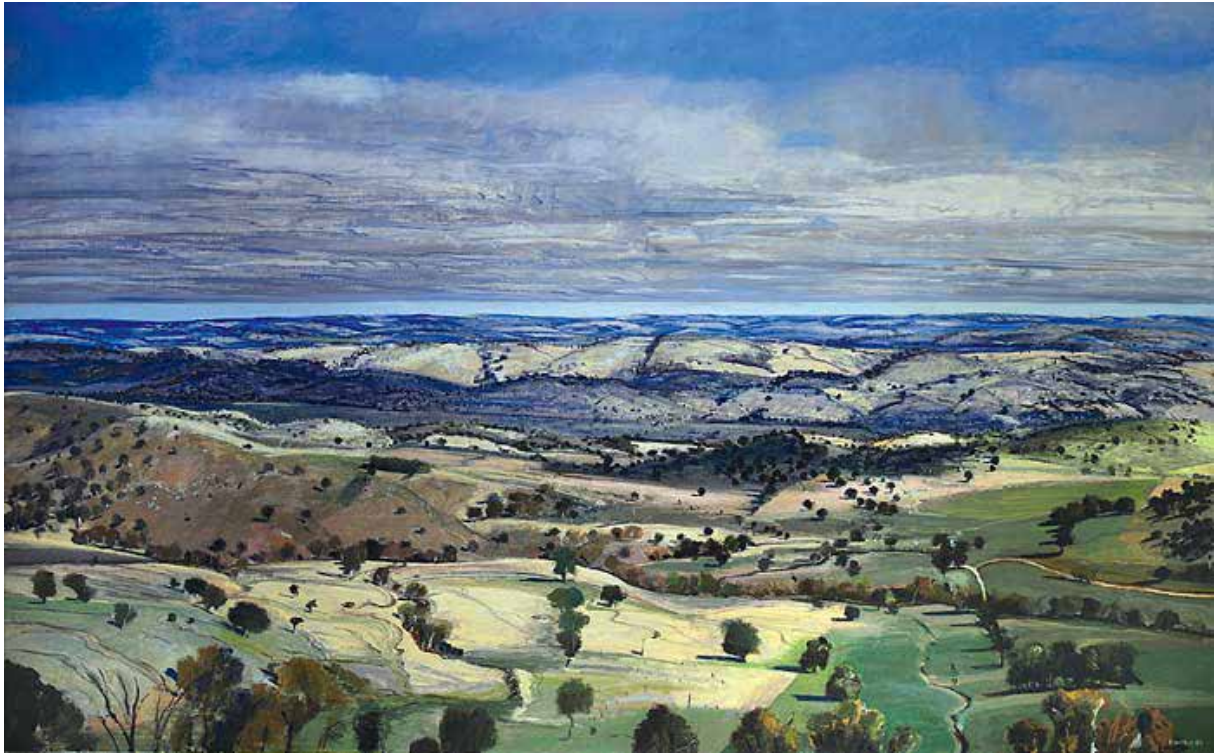
Ian Greig, *More than This*, oil on canvas, 137 x 198 cm, \$9,900



Belinda Fox, *Watching the Sky*, watercolour drawing on board, 92 x 121 cm, \$8,900 - SOLD



Colin Pennock, *Strata*, oil on linen, 140 x 140 cm, \$14,500



Peter Simpson, *Towards Graham from Mt Darling*, oil on linen, 152.5 x 244 cm, \$18,000



Aaron Kinnane, *The Ocean Song*, oil on canvas, 190 x 190 cm, \$15,000 - SOLD



Hobie Porter, *Limen*, oil on polyester canvas, 68 x 90 cm, \$9,900



Carla Hananiah, *The Royal Procession*, oil on board, 91 x 122 cm, \$4,500



Emma Walker, *Qualia II*, oil and acrylic on board, 50 x 50 cm, \$2,000



Peter Simpson, *Mt Ruapehu Study IV*, gouache on paper, 39 x 39 cm, \$1,850



Susan Baird, *Landscape and Light*, oil on linen, 101.5 x 275 cm, \$12,500 - SOLD



Kendal Murray, *Long to Belong*, mixed media assemblage, 8 x 7.5 x 9 cm, \$1,400



Susan Baird, *Last Light, Bald Hill*, oil on linen, 25 x 30 cm, \$2,000



Emma Walker, *Qualia III*, oil and acrylic on board, 50 x 50 cm, \$2,000



Aaron Kinnane, *The Pilgrimage*, oil on canvas, 54 x 54 cm, \$3,200 - SOLD