

PAPER & CLAY

4 MAY – 10 JUN 23



JOHN BAIRD
SUSAN BAIRD
JO BERTINI
FABRIZIO BIVIANO
MICHAYE BOULTER
DEAN BOWEN
JO DAVENPORT
KATE DORROUGH
SCOTT DUNCAN
JAMES ETTELSON
BELINDA FOX & NEVILLE FRENCH
LEAH FRASER
CAROLINE GIBBES
IAN GREIG
DEBORAH HALPERN
NAOMI HOBSON
CLIFFORD HOW
NICOLE KELLY
AMELIA LYNCH
NICOLA MOSS
LAUREN O'CONNOR
SASSY PARK
COLIN PENNOCK
HOBIE PORTER
PETER SIMPSON
ROBYN SWEANEY
EMMA WALKER
SHONA WILSON

PAPER & CLAY

4 MAY – 10 JUN 23

Opening Celebration & Drinks, Thursday 4 May, 5 – 7 pm

‘Paper & Clay’ brings together the work of twenty-nine Australian artists traversing the timeless materiality of two enduring artforms. Unencumbered by dense conceptual wilderness, the works in this show posit medium as both object and subject in a shared celebration of physical form.

Processes of glazing, inscribing, hand-building and throwing come together in a joint exploration of the texture and tactility of clay, and its vast symbolic potential. Buried deeply into clay’s soft, pliable flesh is the promise of creation. We can feel the primordial dance of clay from slab to shape, from earth to fire, choreographed by the artist’s hand. One of the oldest artforms, the ceramic medium articulates histories near and far. It crosses temporal bounds to ancient humanity, when the earth was an artistic bounty. The ceramic artists in this exhibition seem to gesture, gently, towards this unshakable past. Consciously eschewing recent trends in the medium, they engage with the vessel, the container, both thematically and formally. Nods to nature and antiquity – via organic finishes and traditional profiles – hint at the importance of humility and simplicity; a refreshing sentiment in current times.

Paper, like clay, has a history of being simultaneously utilitarian and aesthetic. For millennia it has played a pivotal role in written and visual culture, the everyday-ness of its origins mingling with the elevation of art in ways that carve open a valuable entry point for the viewer. Together, the painters this presentation show us the different ways paper holds pigment – absorbing ink into its porous skin in an osmotic embrace, or propping paint atop its surface like a veil. Areas of paper are exposed in some works and obscured in others, taking us on a pendulum swing between revelation and concealment.

Suffusing the works in ‘Paper & Clay’ is a shared observance of the natural world. Wild, sweeping landscapes and organic surfaces converse with gentle still lifes and close-up fragments of flora as each artist looks to the world around them for inspiration, and guidance. Vessels forged from the earth, fortified by fire, tell tales of hardship and immutability, while vivacious painted topographies lure us into the embryonic energy of natural forces.

It’s tempting to pit the ephemerality of paper against the endurance of clay, certainly, but the works in this speak of relationship, and resemblance. Formal and figurative conversations between the mediums celebrate the power and prowess of the artist’s hand. Each piece is decidedly human, a crucible of creation, tradition, and truth.

This exhibition is presented in collaboration with OBODO Contemporary Furniture featuring the Maori ‘Huggy’ collection designed by international, award winning designer Antonie Lesur. ‘Huggy’ is a playful, curvy, indoor/outdoor furniture collection which perfectly lends itself to the timeless materiality of this show.

MICHAYE BOULTER

Reminiscence I

gouache on paper

76 x 56 cm, 86 x 66 cm (framed)

\$5,500



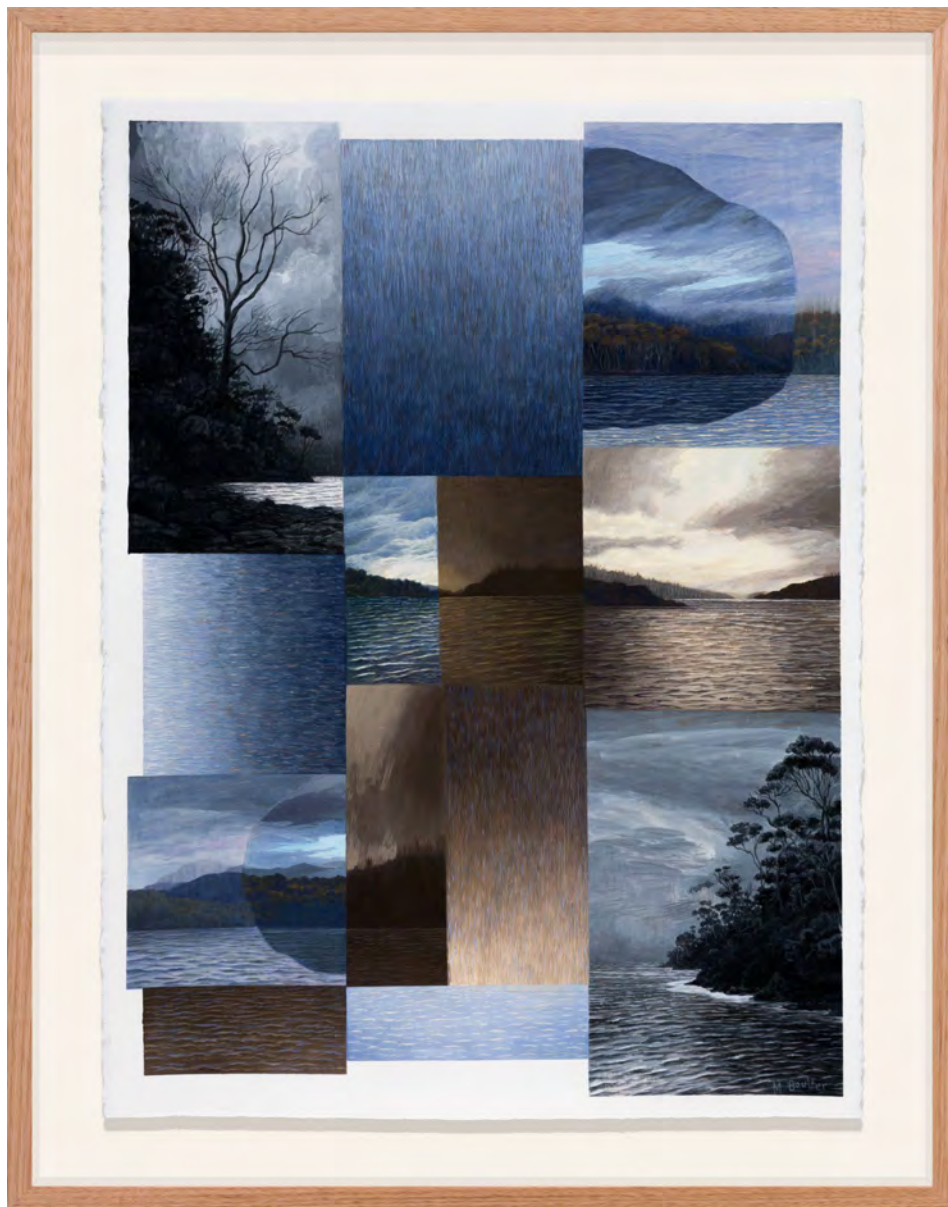
MICHAYE BOULTER

Reminiscence II

gouache on paper

76 x 56 cm, 86 x 66 cm (framed)

\$5,500



FABRIZIO BIVIANO

Lean In

oil on paper

76 x 56 cm, 86 x 66 cm (framed)

\$3,200



FABRIZIO BIVIANO

Step Up

oil on paper

76 x 56 cm, 86 x 66 cm (framed)

\$3,200





LEAH FRASER

The Way of the Night is Dark & Kind I

acrylic on paper

76 x 56 cm, 86 x 66 cm (framed)

\$3,200



LEAH FRASER

The Way of the Night is Dark & Kind II

acrylic on paper

76 x 56 cm, 86 x 66 cm (framed)

\$3,200



LAUREN O'CONNOR

Mountains and Scribbly Gums

acrylic and mixed media on paper

76 x 56 cm, 86 x 66 cm (framed)

\$1,990



LAUREN O'CONNOR

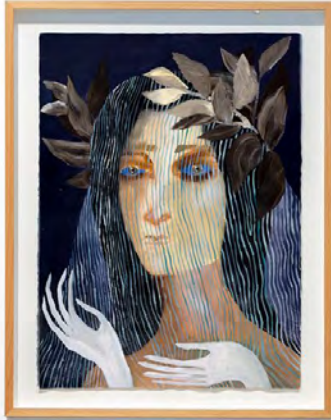
Gunguddy Love Letter

acrylic and mixed media on paper

76 x 56 cm, 86 x 66 cm (framed)

\$1,990





CLIFFORD HOW

Flux II

oil on paper

76 x 56 cm, 86 x 66 cm (framed)

\$4,990



CLIFFORD HOW

The Seasons Departure

oil on paper

76 x 56 cm, 86 x 66 cm (framed)

\$4,990



JO DAVENPORT

Wetlands IV

oil on paper

76 x 56 cm, 86 x 66 cm (framed)

\$4,200



JO DAVENPORT

Wetlands V

oil on paper

76 x 56 cm, 86 x 66 cm (framed)

\$4,200



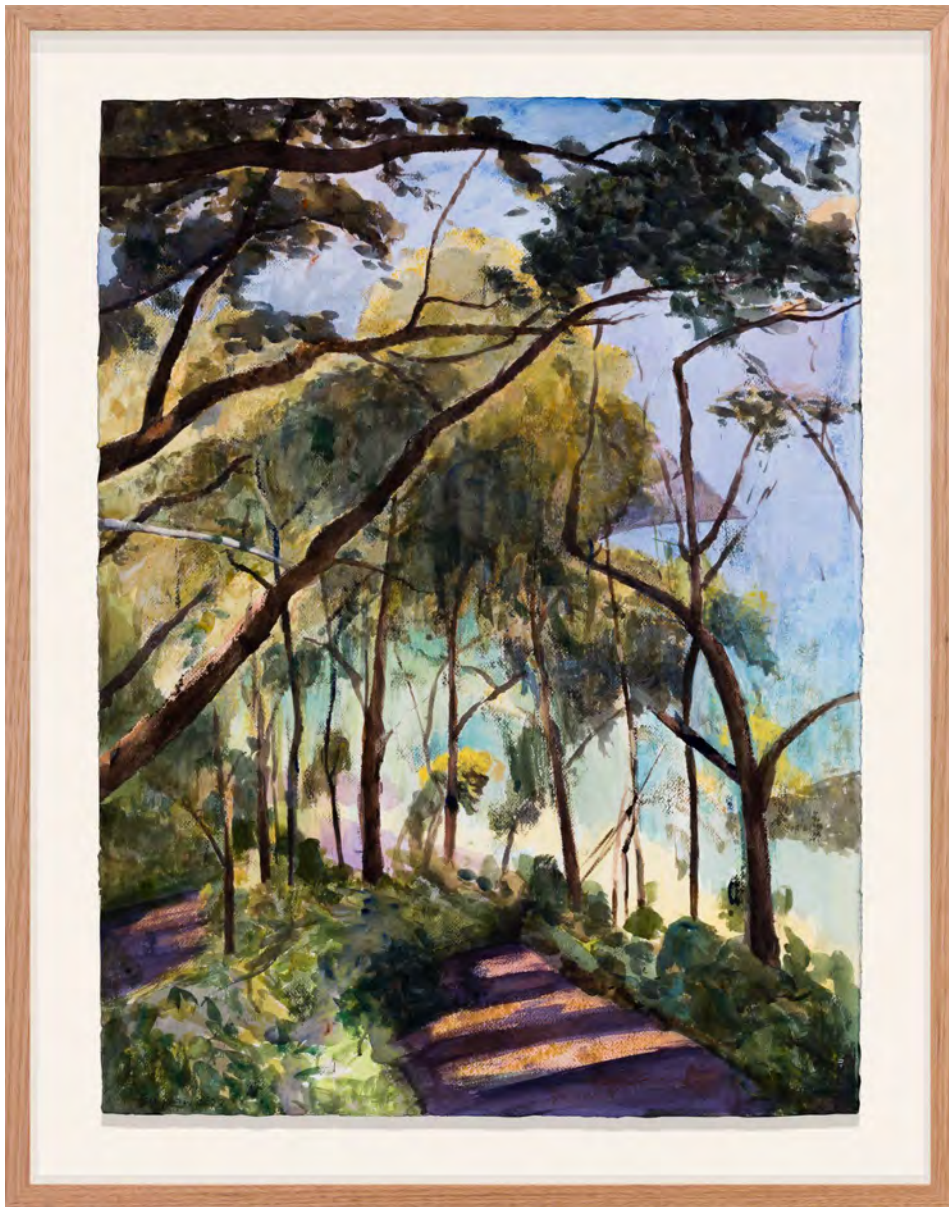
PETER SIMPSON

Bouddi II

oil on paper

76 x 56 cm, 86 x 66 cm (framed)

\$3,200



PETER SIMPSON

Bouddi III

oil on paper

76 x 56 cm, 86 x 66 cm (framed)

\$3,200





BELINDA FOX

Sidewalk Vista I

collage, watercolour and pen on paper

76 x 56 cm, 86 x 66 cm (framed)

\$4,500



BELINDA FOX

Sidewalk Vista II

collage, watercolour and pen on paper

76 x 56 cm, 86 x 66 cm (framed)

\$4,500





NICOLE KELLY

Black Cockatoos

oil monoprint on paper

76 x 56 cm, 86 x 66 cm (framed)

\$3,200



NICOLE KELLY

By Light

oil monprint on paper

76 x 56 cm, 86 x 66 cm (framed)

\$3,200



SUSAN BAIRD

Blue Shimmer

acrylic on paper

76 x 56 cm, 86 x 66 cm (framed)

\$3,200



SUSAN BAIRD

Stringy Gum Garden

acrylic on paper

76 x 56 cm, 86 x 66 cm (framed)

\$3,200



KATE DORROUGH

Land & Sea

acrylic and mixed media on paper

76 x 56 cm, 86 x 66 cm (framed)

\$3,200



KATE DORROUGH

River Song

acrylic and mixed media on paper

76 x 56 cm, 86 x 66 cm (framed)

\$3,200



COLIN PENNOCK

Past Provence

watercolour on paper

76 x 56 cm, 86 x 66 cm (framed)

\$3,200



COLIN PENNOCK

Road Back From Nundle

watercolour and oil on paper

76 x 56 cm, 86 x 66 cm (framed)

\$3,200



NICOLA MOSS

Emerge

collage and mixed media on paper

76 x 56 cm, 86 x 66 cm (framed)

\$3,200



NICOLA MOSS

Tree House

collage and mixed media on paper

76 x 56 cm, 86 x 66 cm (framed)

\$3,200





EMMA WALKER

Slow Drift I

mixed media on paper

76 x 56 cm, 86 x 66 cm (framed)

\$3,200



EMMA WALKER

Slow Drift II

mixed media on paper

76 x 56 cm, 86 x 66 cm (framed)

\$3,200





ROBYN SWEANEY

The Moon Has Two Shadows I

acrylic on paper

76 x 56 cm, 86 x 66 cm (framed)

\$5,500



ROBYN SWEANEY

The Moon Has Two Shadows II

acrylic on paper

76 x 56 cm, 86 x 66 cm (framed)

\$5,500





DEAN BOWEN

Perching Canary

watercolour on paper

76 x 56 cm, 86 x 66 cm (framed)

\$4,200



DEAN BOWEN

Yellow Canary (East)

watercolour on paper

76 x 56 cm, 86 x 66 cm (framed)

\$4,200



JO BERTINI

Blue Spring & Red Willow Creek
gouache and watercolour on paper
76 x 56 cm, 86 x 66 cm (framed)
\$4,200



JO BERTINI

The Mountain Wilds

gouache and watercolour on paper

76 x 56 cm, 86 x 66 cm (framed)

\$4,200





JAMES ETTELSON

Ice Skating

acrylic and mixed media on paper

76 x 56 cm, 86 x 66 cm (framed)

\$2,200



JAMES ETTELSON

Oasis

acrylic on paper

76 x 56 cm, 86 x 66 cm (framed)

\$2,200





IAN GREIG

Corndale

ink on paper

76 x 56 cm, 86 x 66 cm (framed)

\$4,200



IAN GREIG

Strangers Creek Boronia Park

ink on paper

76 x 56 cm, 86 x 66 cm (framed)

\$4,200



HOBIE PORTER

Introduced Habitats for Native Flora: Doryanthes Palmeri II

pastel pencil on paper

76 x 56 cm, 86 x 66 cm (framed)

\$4,200



HOBIE PORTER

Introduced Habitats for Native Flora: Doryanthes Palmeri IV

pastel pencil on paper

76 x 56 cm, 86 x 66 cm (framed)

\$4,200





SHONA WILSON

Seeding

impression mould on paper

76 x 56 cm, 86 x 66 cm (framed)

\$3,200



SHONA WILSON

Receding

seedpods, seeds and found materials on paper

76 x 56 cm, 86 x 66 cm (framed)

\$3,200





DEBORAH HALPERN

Fish Hat

ink on paper

76 x 56 cm, 86 x 66 cm (framed)

\$3,000



DEBORAH HALPERN

Mother & Child

ink on paper

76 x 56 cm, 86 x 66 cm (framed)

\$3,000



JOHN BAIRD

Lattice

ink on paper

76 x 56 cm, 86 x 66 cm (framed)

\$3,000



JOHN BAIRD

Patterned Parrot

ink on paper

76 x 56 cm, 86 x 66 cm (framed)

\$3,000



66 McLachlan Avenue
Rushcutters Bay NSW 2011
+61 2 9332 1019
contact@arthousegallery.com.au
www.arthousegallery.com.au



ARTHOUSE
GALLERY